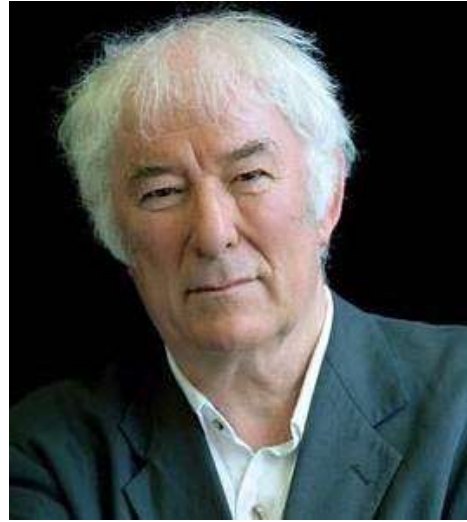


A painting of a coastal landscape. In the foreground, there's a sandy beach with some rocks and a small stream or inlet. The middle ground features a large, dark, craggy cliff that juts out into the sea. The background shows rolling hills and a hazy sky. The overall color palette is dominated by blues, greens, and earthy tones, with visible brushstrokes throughout.

**SONGS AND POEMS OF COUNTY ANTRIM**

**A TRIBUTE TO  
FRANK ROGERS**



# *Airde Luan*



















# *Rathlin*











E.M.I.  
2876

SENIOR PARENTS

*Sailing Southwards from  
Rathlin Island*









Ballycastle

Ballyvoy

Rathlin Island

Churn Bay





BR  
CBA  
FB  
492





# *Glenarm Bay*













Glenarm by Glens Aerial Photography



Download from  
**Dreamstime.com**

This watermarked comp image is for previewing purposes only.



**ID** 101417850

**©** | Dreamstime.com







*Henry Joy McCracken –  
Donegore Hill*











# THE BATTLE OF ANTRIM

June 1798





# *Auld Lamma's Fair*





















*Green Glens of Antrim*











12068. - GLENARIFF, CO. ANTRIM

*I'll Tell Me Ma*

















# *Blue Hills of Antrim*













# *Carrickfergus*



CARK FERGUS

12  $\frac{3}{4}$

MILES

















*Glenavy Dear*

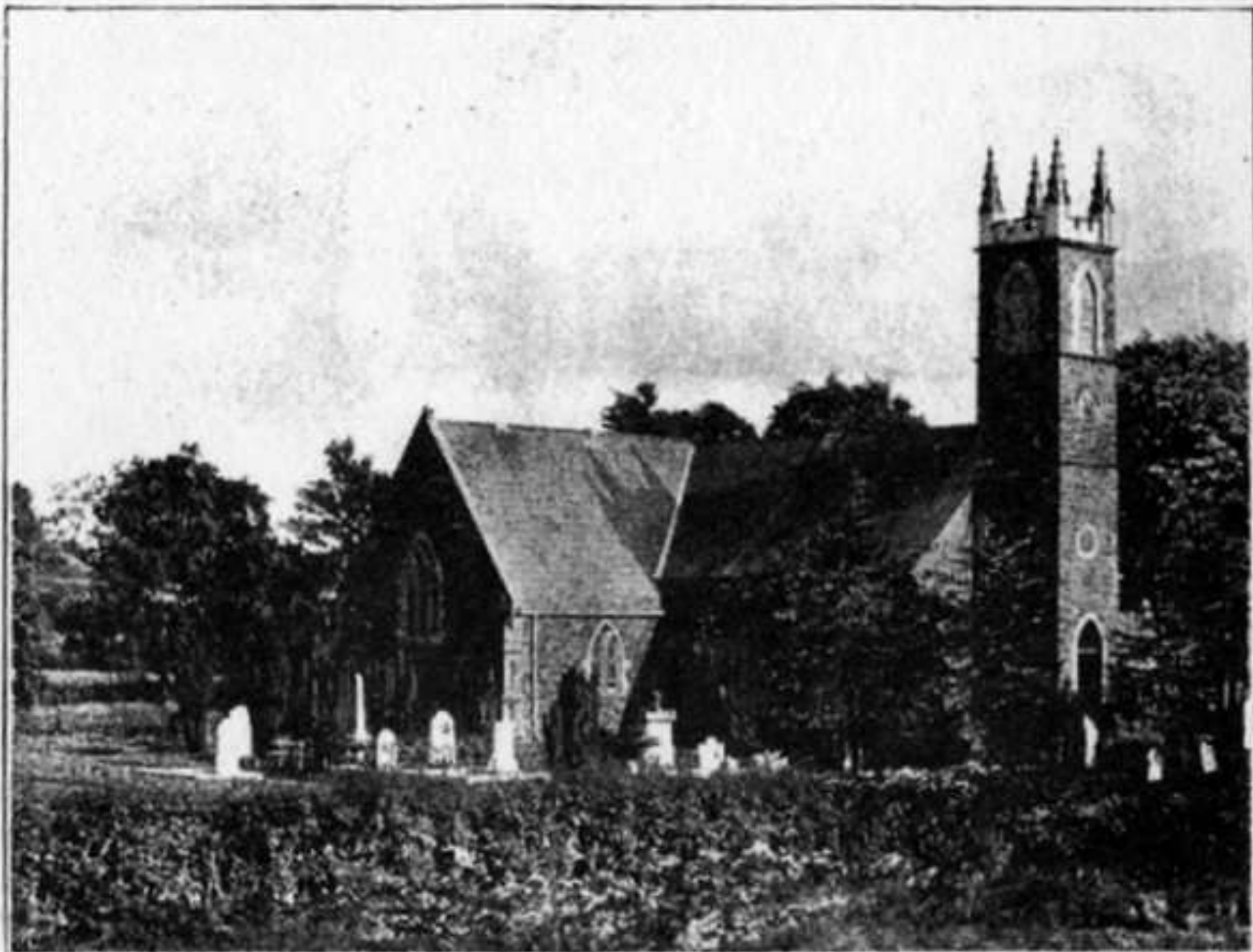
A photograph of a road sign for Glenavy Road. The sign is white with a black border and black text, mounted on two metal posts. It is located on the gravel shoulder of a multi-lane highway. To the left, a white car is driving away. The background shows a grassy embankment and a cloudy sky.

**GLENNAVY ROAD**



# *Rams Island*











# *St Aidan's School Glenavy*

